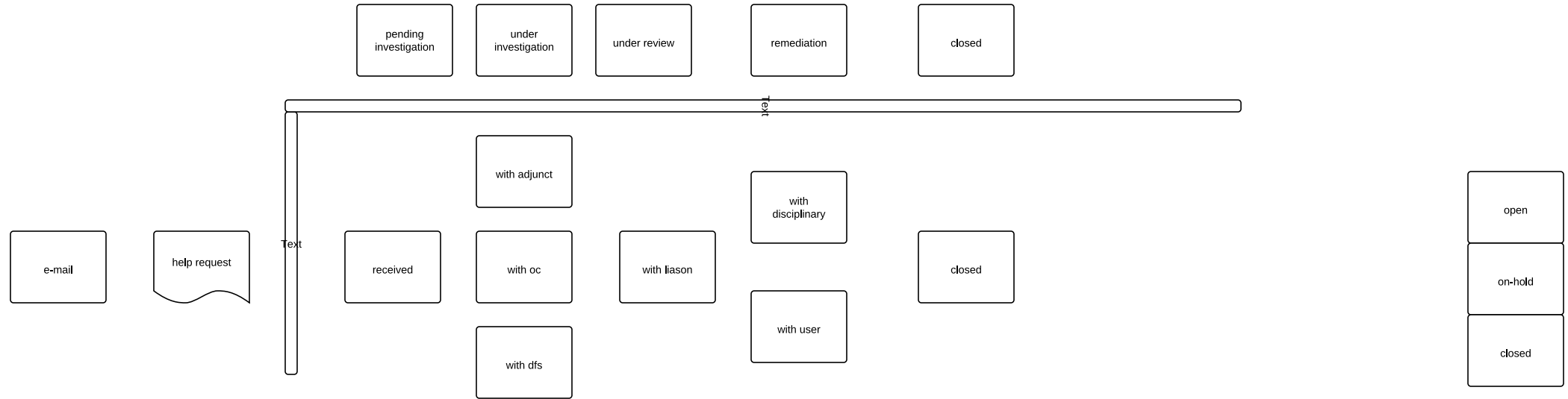
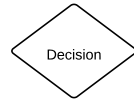


This page describes the various states of the process and how it relates the footprints implementation. i.e. probably does not mean anything to anyone beyond Cam.

The fluid nature of these requests make it difficult to create a process state map that is easy to use and complete. Although the map below lacks detail it does capture where in the process the request is at.



Legend

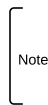


FORMAT
opl # = increment
/ # - from / to

Example

1
3 / 4

Indicates this is off page link number 1
the link is from page 3
the link is to page 4



Off Page Link List:

- opl 1 - yes, unlv network.
- opl 2 - yes, adjunct network.
- opl 3 - oit network id done, off to determine if positive id.
- opl 4 - adjunct network id done, off to determine if positive id.
- opl 5 - resnet positive id, more than 2 previous system offenses.
- opl 6 -
- opl 7 - good id, offense 3.
- opl 8 - good id, offense >= 4.
- opl 9 - non-responsive contacted.
- opl 10 -
- opl 11 -
- opl 12 -
- opl 13 -
- opl 14 -
- opl 15 -
- opl 16 -
- opl 17 -
- opl 18 -
- opl 19 -
- opl 20 -